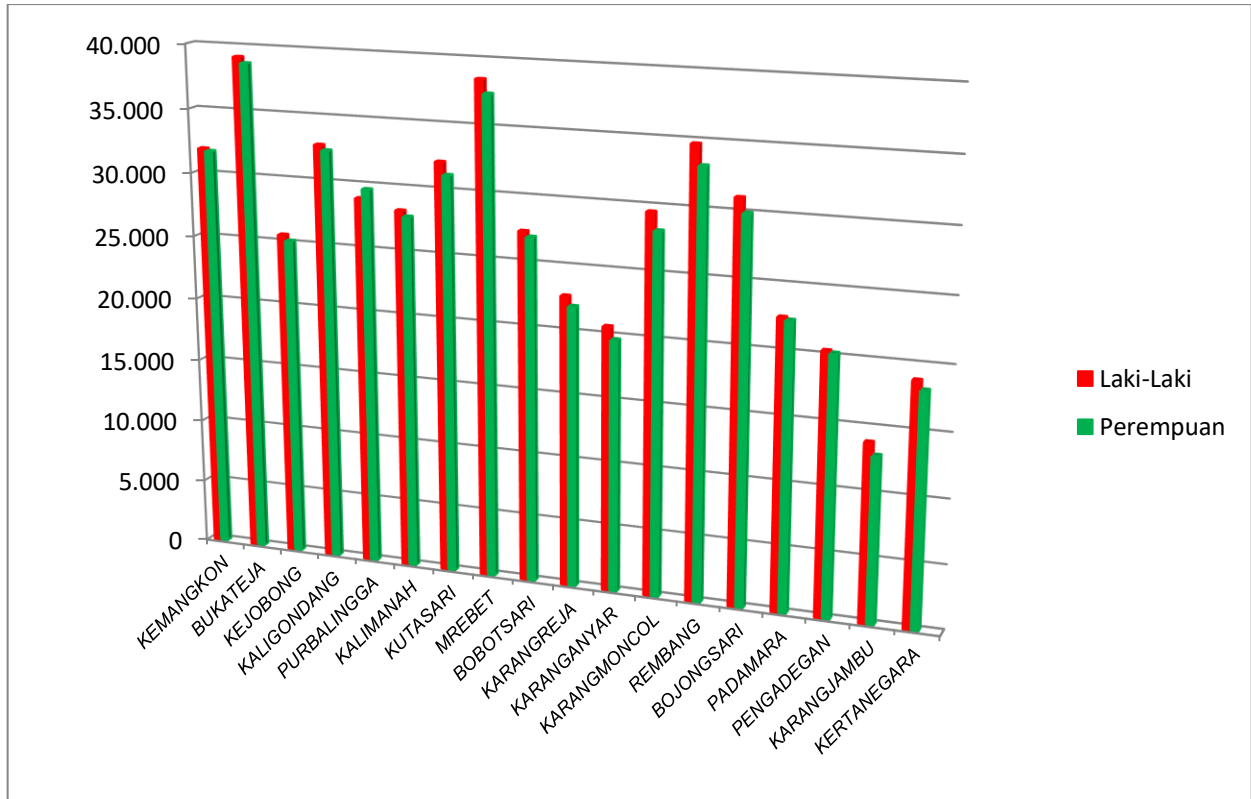


Jumlah Penduduk Kabupaten Purbalingga

No	Kecamatan	Pria		Wanita		Jumlah	
		n	%	n	%	n	%
1	KEMANGKON	31,877	6.40%	31,712	6.51%	63,589	6.45%
2	BUKATEJA	39,119	7.85%	38,670	7.94%	77,789	7.89%
3	KEJOBONG	25,555	5.13%	25,128	5.16%	50,683	5.14%
4	KALIGONDANG	32,766	6.58%	32,380	6.65%	65,146	6.61%
5	PURBALINGGA	28,870	5.79%	29,609	6.08%	58,479	5.93%
6	KALIMANAH	28,167	5.65%	27,739	5.69%	55,906	5.67%
7	KUTASARI	32,097	6.44%	31,141	6.39%	63,238	6.42%
8	MREBET	38,459	7.72%	37,418	7.68%	75,877	7.70%
9	BOBOTSARI	27,329	5.48%	26,941	5.53%	54,270	5.51%
10	KARANGREJA	22,682	4.55%	21,943	4.50%	44,625	4.53%
11	KARANGANYAR	20,643	4.14%	19,692	4.04%	40,335	4.09%
12	KARANGMONCOL	29,506	5.92%	28,157	5.78%	57,663	5.85%
13	REMBANG	34,690	6.96%	33,151	6.80%	67,841	6.88%
14	BOJONGSARI	31,027	6.23%	29,934	6.14%	60,961	6.19%
15	PADAMARA	22,519	4.52%	22,358	4.59%	44,877	4.55%
16	PENGADEGAN	20,347	4.08%	20,219	4.15%	40,566	4.12%
17	KARANGJAMBU	13,849	2.78%	12,919	2.65%	26,768	2.72%
18	KERTANEGARA	18,801	3.77%	18,129	3.72%	36,930	3.75%
Jumlah		498,303	100.00%	487,240	100.00%	985,543	100.00%

Grafik Data Penduduk Kabupaten Purbalingga



Jumlah Penduduk Per Desa

Kecamatan : 33.3.01 KEMANGKON							
No	Desa/Kelurahan	Pria		Wanita		Jumlah	
		n	%	n	%	n	%
1	KEDUNGBENDA	2,431	50.78%	2,356	49,22%	4,787	7,64%
2	BOKOL	1,127	50.29%	1,114	49,71%	2,241	3,58%
3	PELUMUTAN	1,801	49.56%	1,833	50,44%	3,634	5,80%
4	MAJATENGAH	1,946	50.26%	1,926	49,74%	3,872	6,18%
5	KEDUNGLEGOK	1,739	51.03%	1,669	48,97%	3,408	5,44%
6	KEMANGKON	2,131	48.93%	2,224	51,07%	4,355	6,95%
7	PANICAN	2,538	50.17%	2,521	49,83%	5,059	8,08%
8	BAKULAN	1,001	48.95%	1,044	51,05%	2,045	3,27%
9	KARANGKEMIRI	1,109	50.27%	1,097	49,73%	2,206	3,52%
10	PEGANDEKAN	1,543	51.30%	1,465	48,70%	3,008	4,80%
11	SENON	2,538	50.19%	2,519	49,81%	5,057	8,07%
12	SUMILIR	873	48.15%	940	51,85%	1,813	2,89%
13	KALIALANG	749	50.17%	744	49,83%	1,493	2,38%
14	KARANGTENGAH	1,573	49.97%	1,575	50,03%	3,148	5,03%
15	MUNTANG	877	50.66%	854	49,34%	1,731	2,76%
16	GAMBARSAARI	855	49.03%	889	50,97%	1,744	2,78%
17	TOYAREKA	2,962	49.95%	2,968	50,05%	5,930	9,47%
18	JETIS	1,690	49.87%	1,699	50,13%	3,389	5,41%
19	MAJASEM	1,892	51.04%	1,815	48,96%	3,707	5,92%
Jumlah		31,375	50,10%	31,252	49,90%	62,627	100.00

Kecamatan : 33.3.02 BUKATEJA							
No	Desa/Kelurahan	Pria		Wanita		Jumlah	
		n	%	n	%	n	%
1	TIDU	1,563	0.31%	1,569	0,32%	3,132	0,32%
2	WIRASABA	2,695	0.54%	2,650	0,54%	5,345	0,54%
3	KEMBANGAN	4,213	0.85%	4,105	0,84%	8,318	0,84%
4	CIPAWON	3,241	0.65%	3,131	0,64%	6,372	0,65%
5	KARANGCENGIS	3,316	0.67%	3,387	0,70%	6,703	0,68%
6	KARANGGEDANG	3,451	0.69%	3,327	0,68%	6,778	0,69%
7	KARANGNANGKA	1,460	0.29%	1,441	0,30%	2,901	0,29%
8	KUTAWIS	3,548	0.71%	3,483	0,71%	7,031	0,71%
9	KEBUTUH	2,126	0.43%	2,089	0,43%	4,215	0,43%
10	PENARUBAN	994	0.20%	974	0,20%	1,968	0,20%
11	KEDUNGJATI	3,794	0.76%	3,805	0,78%	7,599	0,77%
12	BUKATEJA	4,241	0.85%	4,326	0,89%	8,567	0,87%
13	MAJASARI	2,153	0.43%	2,097	0,43%	4,250	0,43%
14	BAJONG	2,324	0.47%	2,286	0,47%	4,610	0,47%
Jumlah		39,119	7.85%	38,670	7,94%	77,789	7,89%

Kecamatan : 33.3.03 KEJOBONG							
No	Desa/Kelurahan	Pria		Wanita		Jumlah	
		n	%	n	%	n	%
1	BANDINGAN	2,911	0.58%	2,870	0,59%	5,781	0,59%
2	LAMUK	1,853	0.37%	1,785	0,37%	3,638	0,37%
3	SOKANEGARA	1,654	0.33%	1,588	0,33%	3,242	0,33%
4	GUMIWANG	1,201	0.24%	1,266	0,26%	2,467	0,25%
5	KRENCENG	1,830	0.37%	1,795	0,37%	3,625	0,37%
6	NANGKASAWIT	969	0.19%	945	0,19%	1,914	0,19%
7	PANDANSARI	1,967	0.39%	1,888	0,39%	3,855	0,39%
8	KEJOBONG	3,013	0.60%	2,918	0,60%	5,931	0,60%
9	LANGGAR	3,455	0.69%	3,362	0,69%	6,817	0,69%
10	TIMBANG	1,781	0.36%	1,745	0,36%	3,526	0,36%
11	NANGKOD	1,438	0.29%	1,403	0,29%	2,841	0,29%
12	KEDARPAN	1,163	0.23%	1,137	0,23%	2,300	0,23%
13	PANGEMPON	2,320	0.47%	2,426	0,50%	4,746	0,48%
Jumlah		25,555	5.13%	25,128	5,16%	50,683	5,14%

Kecamatan : 33.3.04 KALIGONDANG							
NO	Desa/Kelurahan	Pria		Wanita		Jumlah	
		n	%	n	%	n	%
1	LAMONGAN	1,297	0.26%	1,306	0,27%	2,603	0,26%
2	TEJASARI	1,294	0.26%	1,297	0,27%	2,591	0,26%
3	CILAPAR	1,008	0.20%	1,008	0,21%	2,016	0,20%
4	PENOLIH	1,938	0.39%	1,852	0,38%	3,790	0,38%
5	SINDURAJA	2,498	0.50%	2,436	0,50%	4,934	0,50%
6	SELAKAMBANG	4,198	0.84%	3,981	0,82%	8,179	0,83%
7	SELANEGARA	1,655	0.33%	1,691	0,35%	3,346	0,34%
8	KALIGONDANG	1,561	0.31%	1,606	0,33%	3,167	0,32%
9	BRECEK	716	0.14%	706	0,14%	1,422	0,14%
10	SEMPOR LOR	638	0.13%	630	0,13%	1,268	0,13%
11	PENARUBAN	2,426	0.49%	2,542	0,52%	4,968	0,50%
12	KALIKAJAR	2,287	0.46%	2,249	0,46%	4,536	0,46%
13	KEMBARAN WETAN	1,527	0.31%	1,535	0,32%	3,062	0,31%
14	SLINGA	2,648	0.53%	2,669	0,55%	5,317	0,54%
15	ARENAN	1,911	0.38%	1,879	0,39%	3,790	0,38%
16	SIDANEGARA	1,651	0.33%	1,604	0,33%	3,255	0,33%
17	PAGERANDONG	1,038	0.21%	1,053	0,22%	2,091	0,21%
18	SIDAREJA	2,475	0.50%	2,336	0,48%	4,811	0,49%
Jumlah		32,766	6.58%	32,380	6,65%	65,146	6,61%

Kecamatan : 33.3.05 PURBALINGGA							
No	Desa/Kelurahan	Pria		Wanita		Jumlah	
		n	%	n	%	n	%
1	BOJONG	2,581	0.52%	2,525	0,52%	5,106	0,52%
2	KEDUNGMEJANGAN	1,580	0.32%	1,637	0,34%	3,217	0,33%
3	BANCAR	1,960	0.39%	2,083	0,43%	4,043	0,41%
4	PURBALINGGA WETAN	2,396	0.48%	2,551	0,52%	4,947	0,50%
5	PENAMBONGAN	2,354	0.47%	2,396	0,49%	4,750	0,48%
6	PURBALINGGA KIDUL	2,954	0.59%	3,050	0,63%	6,004	0,61%
7	KANDANGGAMPANG	1,486	0.30%	1,557	0,32%	3,043	0,31%
8	PURBALINGGA KULON	1,315	0.26%	1,336	0,27%	2,651	0,27%
9	PURBALINGGA LOR	3,089	0.62%	3,160	0,65%	6,249	0,63%
10	KEMBARAN KULON	2,359	0.47%	2,455	0,50%	4,814	0,49%
11	WIRASANA	3,645	0.73%	3,659	0,75%	7,304	0,74%
12	TOYAREJA	1,407	0.28%	1,413	0,29%	2,820	0,29%
13	JATISABA	1,744	0.35%	1,787	0,37%	3,531	0,36%
Jumlah		28,870	5.79%	29,609	6,08%	58,479	5,93%

Kecamatan : 33.3.06 KALIMANAH

NO	Desa/Kelurahan	Pria		Wanita		Jumlah	
		n	%	n	%	n	%
1	MEWEK	1,159	0.23%	1,099	0,23%	2,258	0,23%
2	KARANGMANYAR	1,252	0.25%	1,276	0,26%	2,528	0,26%
3	KALIKABONG	3,040	0.61%	2,980	0,61%	6,020	0,61%
4	JOMPO	1,163	0.23%	1,076	0,22%	2,239	0,23%
5	RABAK	1,566	0.31%	1,526	0,31%	3,092	0,31%
6	BLATER	1,921	0.39%	1,849	0,38%	3,770	0,38%
7	MANDURAGA	944	0.19%	954	0,20%	1,898	0,19%
8	KARANGSARI	910	0.18%	884	0,18%	1,794	0,18%
9	KALIMANAH KULON	1,106	0.22%	1,131	0,23%	2,237	0,23%
10	SIDAKANGEN	1,287	0.26%	1,262	0,26%	2,549	0,26%
11	KARANGPETIR	687	0.14%	710	0,15%	1,397	0,14%
12	KALIMANAH WETAN	1,624	0.33%	1,699	0,35%	3,323	0,34%
13	GRECOL	2,028	0.41%	1,970	0,40%	3,998	0,41%
14	SELABAYA	1,977	0.40%	1,987	0,41%	3,964	0,40%
15	KLAPASAWIT	2,394	0.48%	2,305	0,47%	4,699	0,48%
16	KEDUNGWULUH	1,671	0.34%	1,594	0,33%	3,265	0,33%
17	BABAKAN	3,438	0.69%	3,437	0,71%	6,875	0,70%
Jumlah		28,167	5.65%	27,739	5,69%	55,906	5,67%

Kecamatan : 33.3.07 KUTASARI							
NO	Desa/Kelurahan	Pria		Wanita		Jumlah	
		n	%	n	%	n	%
1	KARANGLEWAS	1,341	0.27%	1,304	0,27%	2,645	0,27%
2	MUNJUL	1,880	0.38%	1,799	0,37%	3,679	0,37%
3	SUMINGKIR	2,569	0.52%	2,530	0,52%	5,099	0,52%
4	MERI	2,039	0.41%	1,910	0,39%	3,949	0,40%
5	KUTASARI	2,591	0.52%	2,560	0,53%	5,151	0,52%
6	KARANGKLESEM	1,651	0.33%	1,689	0,35%	3,340	0,34%
7	KARANGREJA	3,179	0.64%	3,114	0,64%	6,293	0,64%
8	KARANGAREN	765	0.15%	737	0,15%	1,502	0,15%
9	LIMBANGAN	2,225	0.45%	2,164	0,44%	4,389	0,45%
10	CENDANA	2,592	0.52%	2,495	0,51%	5,087	0,52%
11	CANDIWULAN	2,785	0.56%	2,739	0,56%	5,524	0,56%
12	KARANGCEGAK	3,410	0.68%	3,263	0,67%	6,673	0,68%
13	CANDINATA	2,930	0.59%	2,751	0,56%	5,681	0,58%
14	KARANGJENGKOL	2,140	0.43%	2,086	0,43%	4,226	0,43%
Jumlah		32,097	6.44%	31,141	6,39%	63,238	6,42%

Kecamatan : 33.3.08 MREBET

NO	Desa/Kelurahan	Pria		Wanita		Jumlah	
		n	%	n	%	n	%
1	KARANGTURI	1,522	0.31%	1,571	0,32%	3,093	0,31%
2	ONJE	2,240	0.45%	2,216	0,45%	4,456	0,45%
3	SINDANG	1,544	0.31%	1,568	0,32%	3,112	0,32%
4	TANGKISAN	2,802	0.56%	2,637	0,54%	5,439	0,55%
5	KRADENAN	1,291	0.26%	1,268	0,26%	2,559	0,26%
6	LAMBUR	1,421	0.29%	1,333	0,27%	2,754	0,28%
7	SELAGANGGENG	1,984	0.40%	1,926	0,40%	3,910	0,40%
8	MANGUNEGARA	1,915	0.38%	1,884	0,39%	3,799	0,39%
9	KARANGNANGKA	1,740	0.35%	1,676	0,34%	3,416	0,35%
10	MREBET	1,190	0.24%	1,204	0,25%	2,394	0,24%
11	BOJONG	2,037	0.41%	1,948	0,40%	3,985	0,40%
12	SERAYU KARANGANYAR	1,369	0.27%	1,332	0,27%	2,701	0,27%
13	SERAYU LARANGAN	1,927	0.39%	1,922	0,39%	3,849	0,39%
14	CAMPAKOAH	1,485	0.30%	1,408	0,29%	2,893	0,29%
15	PAGERANDONG	2,170	0.44%	2,080	0,43%	4,250	0,43%
16	CIPAKU	4,049	0.81%	3,966	0,81%	8,015	0,81%
17	BINANGUN	2,017	0.40%	1,973	0,40%	3,990	0,40%
18	PENGALUSAN	3,250	0.65%	3,127	0,64%	6,377	0,65%
19	SANGKANAYU	2,506	0.50%	2,379	0,49%	4,885	0,50%
Jumlah		38,459	7.72%	37,418	7,68%	75,877	7,70%

Kecamatan : 33.3.09 BOBOTSARI

NO	Desa/Kelurahan	Pria		Wanita		Jumlah	
		n	%	n	%	n	%
1	GANDASULI	1,355	0.27%	1,280	0,26%	2,635	0,27%
2	KALAPACUNG	1,281	0.26%	1,213	0,25%	2,494	0,25%
3	KARANGMALANG	1,699	0.34%	1,658	0,34%	3,357	0,34%
4	BANJARSARI	1,903	0.38%	1,883	0,39%	3,786	0,38%
5	MAJAPURA	2,395	0.48%	2,415	0,50%	4,810	0,49%
6	BOBOTSARI	3,318	0.67%	3,337	0,68%	6,655	0,68%
7	KARANGDUREN	1,804	0.36%	1,715	0,35%	3,519	0,36%
8	PAKUNCEN	1,572	0.32%	1,557	0,32%	3,129	0,32%
9	KARANGTALUN	1,929	0.39%	1,942	0,40%	3,871	0,39%
10	GUNUNGKARANG	1,045	0.21%	1,043	0,21%	2,088	0,21%
11	TALAGENING	1,807	0.36%	1,892	0,39%	3,699	0,38%
12	TLAGAYASA	1,675	0.34%	1,553	0,32%	3,228	0,33%
13	DAGAN	1,944	0.39%	1,903	0,39%	3,847	0,39%
14	PALUMBUNGAN	1,051	0.21%	1,051	0,22%	2,102	0,21%
15	LIMBASARI	1,835	0.37%	1,795	0,37%	3,630	0,37%
16	PALUMBUNGAN WETAN	716	0.14%	704	0,14%	1,420	0,14%
Jumlah		27,329	5.48%	26,941	5,53%	54,270	5,51%

Kecamatan : 33.3.10 KARANGREJA							
NO	Desa/Kelurahan	Pria		Wanita		Jumlah	
		n	%	n	%	n	%
1	SERANG	3,821	0.77%	3,640	0,75%	7,461	0,76%
2	KUTABAWA	3,278	0.66%	3,093	0,63%	6,371	0,65%
3	SIWARAK	3,519	0.71%	3,472	0,71%	6,991	0,71%
4	TLAHAB LOR	4,323	0.87%	4,436	0,91%	8,759	0,89%
5	TLAHAB KIDUL	2,822	0.57%	2,757	0,57%	5,579	0,57%
6	KARANGREJA	2,933	0.59%	2,740	0,56%	5,673	0,58%
7	GONDANG	1,986	0.40%	1,805	0,37%	3,791	0,38%
Jumlah		22,682	4.55%	21,943	4,50%	44,625	4,53%

Kecamatan : 33.3.11 KARANGANYAR							
No	Desa/Kelurahan	Pria		Wanita		Jumlah	
		n	%	n	%	n	%
1	PONJEN	1,897	0.38%	1,733	0,36%	3,630	0,37%
2	BUARA	837	0.17%	814	0,17%	1,651	0,17%
3	BRAKAS	1,035	0.21%	999	0,21%	2,034	0,21%
4	BUNGKANEL	1,468	0.29%	1,421	0,29%	2,889	0,29%
5	LUMPANG	819	0.16%	769	0,16%	1,588	0,16%
6	KARANGGEDANG	1,069	0.21%	1,074	0,22%	2,143	0,22%
7	KABUNDERAN	653	0.13%	621	0,13%	1,274	0,13%
8	JAMBUDESA	1,711	0.34%	1,617	0,33%	3,328	0,34%
9	MARIBAYA	2,098	0.42%	2,008	0,41%	4,106	0,42%
10	KARANGANYAR	2,479	0.50%	2,320	0,48%	4,799	0,49%
11	BANJARKERTA	1,799	0.36%	1,781	0,37%	3,580	0,36%
12	KALIJARAN	2,486	0.50%	2,353	0,48%	4,839	0,49%
13	KALIORI	2,292	0.46%	2,182	0,45%	4,474	0,45%
Jumlah		20,643	4.14%	19,692	4,04%	40,335	4,09%

Kecamatan : 33.3.12 KARANGMONCOL							
No	Desa/Kelurahan	Pria		Wanita		Jumlah	
		n	%	n	%	n	%
1	KARANGSARI	2,193	0.44%	2,043	0,42%	4,236	0,43%
2	PEPEDAN	1,965	0.39%	1,881	0,39%	3,846	0,39%
3	PEKIRINGAN	2,074	0.42%	2,066	0,42%	4,140	0,42%
4	GRANTUNG	1,328	0.27%	1,324	0,27%	2,652	0,27%
5	RAJAWANA	2,432	0.49%	2,295	0,47%	4,727	0,48%
6	TAJUG	1,934	0.39%	1,844	0,38%	3,778	0,38%
7	TAMANSARI	3,517	0.71%	3,396	0,70%	6,913	0,70%
8	BALERAKSA	3,957	0.79%	3,839	0,79%	7,796	0,79%
9	TUNJUNG MULI	5,584	1.12%	5,283	1,08%	10,867	1,10%
10	KRAMAT	1,956	0.39%	1,794	0,37%	3,750	0,38%
11	SIRAU	2,566	0.51%	2,392	0,49%	4,958	0,50%
Jumlah		29,506	5.92%	28,157	5,78%	57,663	5,85%

Kecamatan : 33.3.13 REMBANG							
No	Desa/Kelurahan	Pria		Wanita		Jumlah	
		n	%	n	%	n	%
1	WLAHAR	1,821	0.37%	1,734	0,36%	3,555	0,36%
2	BANTARBARANG	4,407	0.88%	4,084	0,84%	8,491	0,86%
3	KARANGBAWANG	997	0.20%	975	0,20%	1,972	0,20%
4	GUNUNGWULED	2,710	0.54%	2,589	0,53%	5,299	0,54%
5	LOSARI	4,480	0.90%	4,386	0,90%	8,866	0,90%
6	BODASKARANGJATI	2,017	0.40%	1,956	0,40%	3,973	0,40%
7	WANOGARA WETAN	1,429	0.29%	1,362	0,28%	2,791	0,28%
8	WANOGARA KULON	1,037	0.21%	1,021	0,21%	2,058	0,21%
9	MAKAM	4,841	0.97%	4,635	0,95%	9,476	0,96%
10	SUMAMPIR	4,850	0.97%	4,576	0,94%	9,426	0,96%
11	TANALUM	1,908	0.38%	1,856	0,38%	3,764	0,38%
12	PANUSUPAN	4,193	0.84%	3,977	0,82%	8,170	0,83%
Jumlah		34,690	6.96%	33,151	6,80%	67,841	6,88%

Kecamatan : 33.3.14 BOJONGSARI							
No	Desa/Kelurahan	Pria		Wanita		Jumlah	
		n	%	n	%	n	%
1	BROBOT	1,951	0.39%	1,933	0,40%	3,884	0,39%
2	GEMBONG	1,802	0.36%	1,782	0,37%	3,584	0,36%
3	GALUH	1,592	0.32%	1,399	0,29%	2,991	0,30%
4	BANJARAN	2,938	0.59%	2,803	0,58%	5,741	0,58%
5	PATEMON	2,153	0.43%	2,058	0,42%	4,211	0,43%
6	BOJONGSARI	3,115	0.63%	2,990	0,61%	6,105	0,62%
7	KAJONGAN	2,667	0.54%	2,584	0,53%	5,251	0,53%
8	KARANGBANJAR	2,199	0.44%	2,151	0,44%	4,350	0,44%
9	BEJI	1,964	0.39%	1,938	0,40%	3,902	0,40%
10	PAGEDANGAN	1,981	0.40%	1,896	0,39%	3,877	0,39%
11	PEKALONGAN	2,811	0.56%	2,724	0,56%	5,535	0,56%
12	METENGGENG	2,069	0.42%	2,001	0,41%	4,070	0,41%
13	BUMISARI	3,785	0.76%	3,675	0,75%	7,460	0,76%
Jumlah		31,027	6.23%	29,934	6,14%	60,961	6,19%

Kecamatan : 33.3.15 PADAMARA							
No	Desa/Kelurahan	Pria		Wanita		Jumlah	
		n	%	n	%	n	%
1	KARANGSENTUL	1,281	0.26%	1,307	0,27%	2,588	0,26%
2	KARANGPULE	748	0.15%	695	0,14%	1,443	0,15%
3	SOKAWERA	1,250	0.25%	1,254	0,26%	2,504	0,25%
4	KARANGJAMBE	2,011	0.40%	1,950	0,40%	3,961	0,40%
5	BOJANEGARA	3,160	0.63%	3,100	0,64%	6,260	0,64%
6	GEMURUH	2,014	0.40%	1,997	0,41%	4,011	0,41%
7	DAWUHAN	2,071	0.42%	2,031	0,42%	4,102	0,42%
8	PRIGI	1,546	0.31%	1,520	0,31%	3,066	0,31%
9	PADAMARA	1,445	0.29%	1,484	0,30%	2,929	0,30%
10	PURBAYASA	1,092	0.22%	1,103	0,23%	2,195	0,22%
11	KALITINGGAR	1,342	0.27%	1,302	0,27%	2,644	0,27%
12	MIPIRAN	1,642	0.33%	1,658	0,34%	3,300	0,33%
13	KARANGGAMBAS	2,065	0.41%	2,077	0,43%	4,142	0,42%
14	KALITINGGAR KIDUL	852	0.17%	880	0,18%	1,732	0,18%
Jumlah		22,519	4.52%	22,358	4,59%	44,877	4,55%

Kecamatan : 33.3.16 PENGADEGAN							
No	Desa/Kelurahan	Pria		Wanita		Jumlah	
		n	%	n	%	n	%
1	PANUNGGALAN	1,117	0.22%	1,134	0,23%	2,251	0,23%
2	LARANGAN	2,286	0.46%	2,380	0,49%	4,666	0,47%
3	PASUNGGINGAN	3,047	0.61%	2,909	0,60%	5,956	0,60%
4	PENGADEGAN	4,993	1.00%	4,945	1,01%	9,938	1,01%
5	KARANGJOHO	1,058	0.21%	1,051	0,22%	2,109	0,21%
6	BEDAGAS	2,224	0.45%	2,260	0,46%	4,484	0,45%
7	TUMANGGAL	2,072	0.42%	2,020	0,41%	4,092	0,42%
8	TEGALPINGEN	2,278	0.46%	2,281	0,47%	4,559	0,46%
9	TETEL	1,272	0.26%	1,239	0,25%	2,511	0,25%
Jumlah		20,347	4.08%	20,219	4,15%	40,566	4,12%

Kecamatan : 33.3.17 KARANGJAMBU							
No	Desa/Kelurahan	Pria		Wanita		Jumlah	
		n	%	n	%	n	%
1	PURBASARI	3,291	0.66%	3,024	0,62%	6,315	0,64%
2	SIRANDU	1,536	0.31%	1,432	0,29%	2,968	0,30%
3	KARANGJAMBU	2,796	0.56%	2,679	0,55%	5,475	0,56%
4	SANGUWATANG	2,517	0.51%	2,419	0,50%	4,936	0,50%
5	JINGKANG	2,219	0.45%	1,972	0,40%	4,191	0,43%
6	DANASARI	1,490	0.30%	1,393	0,29%	2,883	0,29%
Jumlah		13,849	2.78%	12,919	2,65%	26,768	2,72%

Kecamatan : 33.3.18 KERTANEGARA							
No	Desa/Kelurahan	Pria		Wanita		Jumlah	
		n	%	n	%	n	%
1	KRANGEAN	3,489	0.70%	3,310	0,68%	6,799	0,69%
2	DARMA	819	0.16%	829	0,17%	1,648	0,17%
3	LANGKAP	2,060	0.41%	1,917	0,39%	3,977	0,40%
4	ADIARSA	1,575	0.32%	1,606	0,33%	3,181	0,32%
5	KARANGASEM	2,312	0.46%	2,243	0,46%	4,555	0,46%
6	KARANGPUCUNG	1,158	0.23%	1,148	0,24%	2,306	0,23%
7	CONDONG	926	0.19%	901	0,18%	1,827	0,19%
8	KASIH	1,730	0.35%	1,645	0,34%	3,375	0,34%
9	KARANGTENGAH	1,599	0.32%	1,530	0,31%	3,129	0,32%
10	KERTANEGARA	2,279	0.46%	2,175	0,45%	4,454	0,45%
11	MERGASANA	854	0.17%	825	0,17%	1,679	0,17%
Jumlah		18,801	3.77%	18,129	3,72%	36,930	3,75%

Rasio Kepadatan Penduduk Kabupaten Purbalingga

No	Kecamatan		Jumlah Penduduk		Luas Wilayah (KM2)	Kepadatan Penduduk
	Kode	Nama	Jumlah	%		
1	33.3.01	KEMANGKON	63,589	6,45%	45.13	1409.02
2	33.3.02	BUKATEJA	77,789	7,89%	42.4	1834.65
3	33.3.03	KEJOBONG	50,683	5,14%	39.98	1267.71
4	33.3.04	KALIGONDANG	65,146	6,61%	50.54	1289
5	33.3.05	PURBALINGGA	58,479	5,93%	14.72	3972.76
6	33.3.06	KALIMANAH	55,906	5,67%	22.51	2483.61
7	33.3.07	KUTASARI	63,238	6,42%	52.9	1195.43
8	33.3.08	MREBET	75,877	7,70%	47.89	1584.4
9	33.3.09	BOBOTSARI	54,270	5,51%	32.28	1681.23
10	33.3.10	KARANGREJA	44,625	4,53%	74.49	599.07
11	33.3.11	KARANGANYAR	40,335	4,09%	30.55	1320.29
12	33.3.12	KARANGMONCOL	57,663	5,85%	60.27	956.74
13	33.3.13	REMBANG	67,841	6,88%	91.59	740.7
14	33.3.14	BOJONGSARI	60,961	6,19%	29.25	2084.14
15	33.3.15	PADAMARA	44,877	4,55%	17.27	2598.55
16	33.3.16	PENGADEGAN	40,566	4,12%	41.75	971.64
17	33.3.17	KARANGJAMBU	26,768	2,72%	46.09	580.78
18	33.3.18	KERTANEGARA	36,930	3,75%	38.02	971.33
Jumlah			985,543	100,00%	777.63	1267.37

Laju Pertumbuhan Penduduk

No	Kecamatan		Jumlah Penduduk Sekarang		Jumlah Penduduk Thn Sebelum		Angka Pertumbuhan Penduduk
	Kode	Nama	n	%	n	%	
1	33.3.01	KEMANGKON	63,589	6,45%	62,627	6.46%	1.51%
2	33.3.02	BUKATEJA	77,789	7,89%	76,655	7.91%	1.46%
3	33.3.03	KEJOBONG	50,683	5,14%	49,881	5.14%	1.58%
4	33.3.04	KALIGONDANG	65,146	6,61%	64,164	6.62%	1.51%
5	33.3.05	PURBALINGGA	58,479	5,93%	57,902	5.97%	0.99%
6	33.3.06	KALIMANAH	55,906	5,67%	54,973	5.67%	1.67%
7	33.3.07	KUTASARI	63,238	6,42%	62,087	6.40%	1.82%
8	33.3.08	MREBET	75,877	7,70%	74,180	7.65%	2.24%
9	33.3.09	BOBOTSARI	54,270	5,51%	53,565	5.52%	1.30%
10	33.3.10	KARANGREJA	44,625	4,53%	43,804	4.52%	1.84%
11	33.3.11	KARANGANYAR	40,335	4,09%	39,583	4.08%	1.86%
12	33.3.12	KARANGMONCOL	57,663	5,85%	56,619	5.84%	1.81%
13	33.3.13	REMBANG	67,841	6,88%	66,745	6.88%	1.62%
14	33.3.14	BOJONGSARI	60,961	6,19%	60,129	6.20%	1.36%
15	33.3.15	PADAMARA	44,877	4,55%	44,229	4.56%	1.44%
16	33.3.16	PENGADEGAN	40,566	4,12%	40,029	4.13%	1.32%
17	33.3.17	KARANGJAMBU	26,768	2,72%	26,143	2.70%	2.33%
18	33.3.18	KERTANEGARA	36,930	3,75%	36,369	3.75%	1.52%
Jumlah			985,543	100,00%	969,684	100.00%	1.61%

Jumlah dan Proporsi Penduduk Menurut Umur dan Jenis Kelamin

No	Kelompok Umur	Pria		Wanita		Jumlah	
		n	%	n	%	n	%
1	0-4	35,248	7.07%	33,323	6,84%	68,571	6,96%
2	5-9	40,468	8.12%	37,854	7,77%	78,322	7,95%
3	10-14	39,745	7.98%	37,174	7,63%	76,919	7,80%
4	15-19	38,733	7.77%	37,565	7,71%	76,298	7,74%
5	20-24	38,761	7.78%	37,810	7,76%	76,571	7,77%
6	25-29	38,888	7.80%	37,137	7,62%	76,025	7,71%
7	30-34	38,144	7.65%	36,807	7,55%	74,951	7,61%
8	35-39	40,511	8.13%	39,657	8,14%	80,168	8,13%
9	40-44	36,711	7.37%	36,455	7,48%	73,166	7,42%
10	45-49	33,536	6.73%	33,515	6,88%	67,051	6,80%
11	50-54	28,222	5.66%	30,293	6,22%	58,515	5,94%
12	55-59	25,511	5.12%	26,725	5,48%	52,236	5,30%
13	60-64	19,971	4.01%	20,420	4,19%	40,391	4,10%
14	65-69	16,142	3.24%	15,561	3,19%	31,703	3,22%
15	70-74	11,272	2.26%	11,549	2,37%	22,821	2,32%
16	>=75	16,440	3.30%	15,395	3,16%	31,835	3,23%
Jumlah		498,303	100,00%	487,240	100,00%	985,543	100,00%

Rasio Jenis Kelamin Penduduk Kabupaten Purbalingga

No	Kelompok Umur	Pria	Wanita	Jumlah Penduduk	Rasio Jenis Kelamin
1	0-4	35,248	33,323	68,571	105.78
2	5-9	40,468	37,854	78,322	106.91
3	10-14	39,745	37,174	76,919	106.92
4	15-19	38,733	37,565	76,298	103.11
5	20-24	38,761	37,810	76,571	102.52
6	25-29	38,888	37,137	76,025	104.71
7	30-34	38,144	36,807	74,951	103.63
8	35-39	40,511	39,657	80,168	102.15
9	40-44	36,711	36,455	73,166	100.7
10	45-49	33,536	33,515	67,051	100.06
11	50-54	28,222	30,293	58,515	93.16
12	55-59	25,511	26,725	52,236	95.46
13	60-64	19,971	20,420	40,391	97.8
14	65-69	16,142	15,561	31,703	103.73
15	70-74	11,272	11,549	22,821	97.6
16	>=75	16,440	15,395	31,835	106.79
Jumlah		498,303	487,240	985,543	102.27

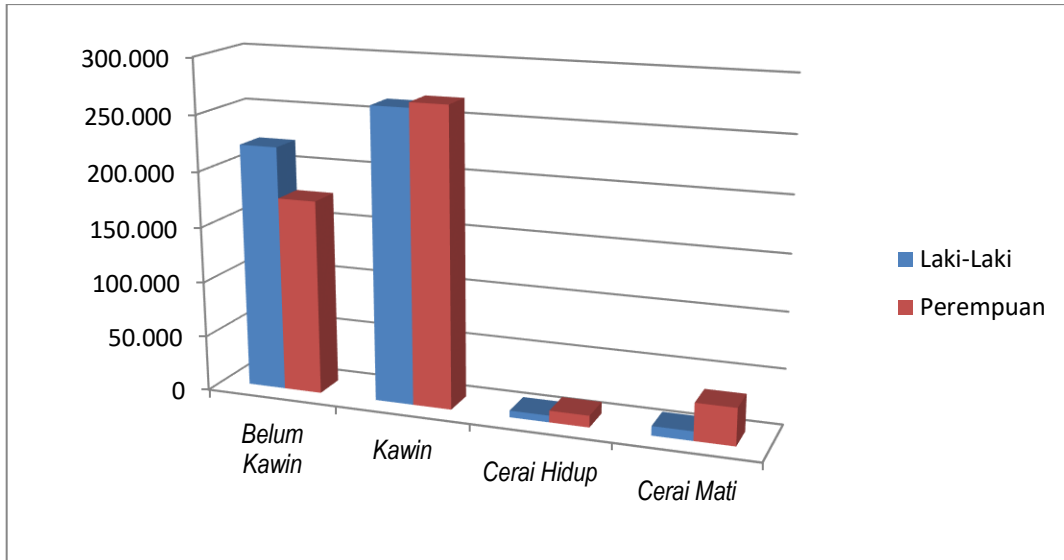
Jumlah Penduduk Berdasarkan Agama

No	Agama	Pria		Wanita		Jumlah	
		n	%	n	%	n	%
1	Islam	494,679	99.27%	483,403	99,21%	978,082	99,24%
2	Kristen	2,420	0.49%	2,567	0,53%	4,987	0,51%
3	Katholik	1,095	0.22%	1,181	0,24%	2,276	0,23%
4	Hindu	10	0.00%	6	0,00%	16	0,00%
5	Budha	59	0.01%	43	0,01%	102	0,01%
6	Konghuchu	12	0.00%	12	0,00%	24	0,00%
7	Kepercayaan	28	0.01%	28	0,01%	56	0,01%
Jumlah		498,303	100,00%	487,240	100,00%	985,543	100,00%

Jumlah Penduduk Berdasarkan Status Kawin

No	Status Perkawinan	Pria		Wanita		Jumlah	
		n	%	n	%	n	%
1	Belum Kawin	220,783	44.31%	175,401	36,00%	396,184	40,20%
2	Kawin	263,012	52.78%	267,802	54,96%	530,814	53,86%
3	Cerai Hidup	6,061	1.22%	10,533	2,16%	16,594	1,68%
4	Cerai Mati	8,447	1.70%	33,504	6,88%	41,951	4,26%
Jumlah		498,303	100,00%	487,240	100,00%	985,543	100,00%

Grafik Penduduk Berdasarkan Status Kawin



Jumlah Wajib EKTP dan Kepemilikan EKTP per Kecamatan

No	Kecamatan	Kepemilikan EKTP		Wajib KTP		Persentase Kepemilikan KTP
		n	%	n	%	
1	KEMANGKON	47,686	6,54%	47,733	6,52%	99,90%
2	BUKATEJA	57,437	7,87%	57,626	7,87%	99,67%
3	KEJOBONG	37,700	5,17%	37,883	5,17%	99,52%
4	KALIGONDANG	48,359	6,63%	48,517	6,63%	99,67%
5	PURBALINGGA	44,189	6,06%	44,241	6,04%	99,88%
6	KALIMANAH	42,052	5,76%	42,102	5,75%	99,88%
7	KUTASARI	45,649	6,26%	45,779	6,25%	99,72%
8	MREBET	56,260	7,71%	56,493	7,72%	99,59%
9	BOBOTSARI	40,521	5,55%	40,661	5,55%	99,66%
10	KARANGREJA	32,404	4,44%	32,598	4,45%	99,40%
11	KARANGANYAR	29,957	4,11%	30,054	4,10%	99,68%
12	KARANGMONCOL	42,872	5,88%	43,032	5,88%	99,63%
13	REMBANG	50,120	6,87%	50,372	6,88%	99,50%
14	BOJONGSARI	44,847	6,15%	45,014	6,15%	99,63%
15	PADAMARA	33,103	4,54%	33,197	4,53%	99,72%
16	PENGADEGAN	29,926	4,10%	30,070	4,11%	99,52%
17	KARANGJAMBU	19,404	2,66%	19,520	2,67%	99,41%
18	KERTANEGARA	27,211	3,73%	27,332	3,73%	99,56%
Jumlah		729,697	100,00%	732,224	100,00%	99,65%

Jumlah Kepemilikan Akta Kelahiran Pencatatan Sipil per Kecamatan

No	Kecamatan	Jumlah Penduduk Memiliki Akta Kelahiran		Jumlah Penduduk		Persentase Kepemilikan Akta Kelahiran
		n	%	n	%	
1	KEMANGKON	22,757	6,13%	63,589	6,45%	35,79%
2	BUKATEJA	31,700	8,54%	77,789	7,89%	40,75%
3	KEJOBONG	17,477	4,71%	50,683	5,14%	34,48%
4	KALIGONDANG	24,159	6,51%	65,146	6,61%	37,08%
5	PURBALINGGA	22,449	6,05%	58,479	5,93%	38,39%
6	KALIMANAH	25,818	6,95%	55,906	5,67%	46,18%
7	KUTASARI	25,843	6,96%	63,238	6,42%	40,87%
8	MREBET	26,217	7,06%	75,877	7,70%	34,55%
9	BOBOTSARI	18,505	4,98%	54,270	5,51%	34,10%
10	KARANGREJA	15,607	4,20%	44,625	4,53%	34,97%
11	KARANGANYAR	16,059	4,32%	40,335	4,09%	39,81%
12	KARANGMONCOL	20,953	5,64%	57,663	5,85%	36,34%
13	REMBANG	23,288	6,27%	67,841	6,88%	34,33%
14	BOJONGSARI	22,288	6,00%	60,961	6,19%	36,56%
15	PADAMARA	17,853	4,81%	44,877	4,55%	39,78%
16	PENGADEGAN	14,083	3,79%	40,566	4,12%	34,72%
17	KARANGJAMBU	10,106	2,72%	26,768	2,72%	37,75%
18	KERTANEGARA	16,193	4,36%	36,930	3,75%	43,85%
Jumlah		371,355	100,00%	985,543	100,00%	37,68%

Jumlah Kepemilikan Akta Perkawinan Pencatatan Sipil per Kecamatan

No	Kecamatan	Jumlah Penduduk Memiliki Akta Perkawinan		Jumlah Penduduk Berstatus Kawin		Persentase Kepemilikan Akta Perkawinan
		n	%	n	%	
1	KEMANGKON	4,444	4,76%	34,475	6,49%	12,89%
2	BUKATEJA	7,924	8,49%	40,744	7,68%	19,45%
3	KEJOBONG	3,696	3,96%	28,400	5,35%	13,01%
4	KALIGONDANG	5,948	6,37%	35,160	6,62%	16,92%
5	PURBALINGGA	5,227	5,60%	29,906	5,63%	17,48%
6	KALIMANAH	7,801	8,36%	29,658	5,59%	26,30%
7	KUTASARI	14,221	15,23%	34,237	6,45%	41,54%
8	MREBET	4,090	4,38%	41,863	7,89%	9,77%
9	BOBOTSARI	2,562	2,74%	28,821	5,43%	8,89%
10	KARANGREJA	2,639	2,83%	25,329	4,77%	10,42%
11	KARANGANYAR	4,484	4,80%	21,254	4,00%	21,10%
12	KARANGMONCOL	2,327	2,49%	30,473	5,74%	7,64%
13	REMBANG	3,035	3,25%	36,065	6,79%	8,42%
14	BOJONGSARI	6,787	7,27%	33,035	6,22%	20,54%
15	PADAMARA	4,779	5,12%	24,100	4,54%	19,83%
16	PENGADEGAN	1,675	1,79%	23,047	4,34%	7,27%
17	KARANGJAMBU	4,279	4,58%	15,021	2,83%	28,49%
18	KERTANEGARA	7,442	7,97%	19,226	3,62%	38,71%
Jumlah		93,360	100,00%	530,814	100,00%	17,59%

Jumlah Kepemilikan Akta Perceraian Pencatatan Sipil per Kecamatan

No	Kecamatan	Jumlah Penduduk Memiliki Akta Perceraian		Jumlah Penduduk Berstatus Cerai Hidup		Persentase Kepemilikan Akta Perceraian
		n	%	n	%	
1	KEMANGKON	305	6,57%	1,137	6,85%	26,82%
2	BUKATEJA	609	13,12%	1,554	9,36%	39,19%
3	KEJOBONG	168	3,62%	854	5,15%	19,67%
4	KALIGONDANG	497	10,71%	1,083	6,53%	45,89%
5	PURBALINGGA	315	6,79%	1,191	7,18%	26,45%
6	KALIMANAH	159	3,43%	1,042	6,28%	15,26%
7	KUTASARI	570	12,28%	1,067	6,43%	53,42%
8	MREBET	223	4,80%	1,363	8,21%	16,36%
9	BOBOTSARI	165	3,55%	1,015	6,12%	16,26%
10	KARANGREJA	156	3,36%	543	3,27%	28,73%
11	KARANGANYAR	185	3,99%	659	3,97%	28,07%
12	KARANGMONCOL	65	1,40%	804	4,85%	8,08%
13	REMBANG	127	2,74%	1,005	6,06%	12,64%
14	BOJONGSARI	415	8,94%	869	5,24%	47,76%
15	PADAMARA	143	3,08%	829	5,00%	17,25%
16	PENGADEGAN	89	1,92%	702	4,23%	12,68%
17	KARANGJAMBU	171	3,68%	330	1,99%	51,82%
18	KERTANEGARA	280	6,03%	547	3,30%	51,19%
Jumlah		4,642	100,00%	16,594	100,00%	27,97%

Angka Migrasi Masuk Per Kecamatan

No	Kecamatan	Pria	Wanita	Jumlah		Jumlah Penduduk Pertengahan Tahun	Angka Migrasi Masuk
				n	%		
1	KEMANGKON	12	14	26	5,96%	63121.5	0.41
2	BUKATEJA	20	12	32	7,34%	77235	0.41
3	KEJOBONG	10	3	13	2,98%	50288.5	0.26
4	KALIGONDANG	19	13	32	7,34%	64660	0.49
5	PURBALINGGA	28	25	53	12,16%	58201.5	0.91
6	KALIMANAH	21	19	40	9,17%	55450.5	0.72
7	KUTASARI	13	12	25	5,73%	62668.5	0.4
8	MREBET	23	18	41	9,40%	75035.5	0.55
9	BOBOTSARI	14	10	24	5,50%	53922.5	0.45
10	KARANGREJA	4	3	7	1,61%	44219.5	0.16
11	KARANGANYAR	12	4	16	3,67%	39964	0.4
12	KARANGMONCOL	8	8	16	3,67%	57146	0.28
13	REMBANG	15	16	31	7,11%	67306.5	0.46
14	BOJONGSARI	10	11	21	4,82%	60548.5	0.35
15	PADAMARA	23	13	36	8,26%	44558.5	0.81
16	PENGADEGAN	3	4	7	1,61%	40301.5	0.17
17	KARANGJAMBU	1	6	7	1,61%	26458.5	0.26
18	KERTANEGARA	4	5	9	2,06%	36654	0.25
Jumlah		240	196	436	100,00%	977740.5	0.45

Angka Migrasi Keluar Per Kecamatan

No	Kecamatan	Pria	Wanita	Jumlah		Jumlah Penduduk Pertengahan Tahun	Angka Migrasi Keluar
				n	%		
1	KEMANGKON	188	171	359	7,93%	63121.5	5.69
2	BUKATEJA	212	198	410	9,06%	77235	5.31
3	KEJOBONG	92	85	177	3,91%	50288.5	3.52
4	KALIGONDANG	109	99	208	4,60%	64660	3.22
5	PURBALINGGA	201	197	398	8,79%	58201.5	6.84
6	KALIMANAH	127	116	243	5,37%	55450.5	4.38
7	KUTASARI	106	82	188	4,15%	62668.5	3
8	MREBET	165	138	303	6,69%	75035.5	4.04
9	BOBOTSARI	139	131	270	5,97%	53922.5	5.01
10	KARANGREJA	104	80	184	4,07%	44219.5	4.16
11	KARANGANYAR	74	97	171	3,78%	39964	4.28
12	KARANGMONCOL	148	134	282	6,23%	57146	4.93
13	REMBANG	211	187	398	8,79%	67306.5	5.91
14	BOJONGSARI	109	121	230	5,08%	60548.5	3.8
15	PADAMARA	132	128	260	5,74%	44558.5	5.84
16	PENGADEGAN	82	84	166	3,67%	40301.5	4.12
17	KARANGJAMBU	58	54	112	2,47%	26458.5	4.23
18	KERTANEGARA	96	71	167	3,69%	36654	4.56
Jumlah		2,353	2,173	4,526	100,00%	977740.5	4.63

Angka Migrasi Neto Per Kecamatan

No	Kecamatan	Jumlah Migrasi			Jumlah Penduduk Pertengahan Tahun	Angka Migrasi Neto
		Masuk	Keluar	Selisih		
1	KEMANGKON	26	359	-333	63121.5	-5.28
2	BUKATEJA	32	410	-378	77235	-4.89
3	KEJOBONG	13	177	-164	50288.5	-3.26
4	KALIGONDANG	32	208	-176	64660	-2.72
5	PURBALINGGA	53	398	-345	58201.5	-5.93
6	KALIMANAH	40	243	-203	55450.5	-3.66
7	KUTASARI	25	188	-163	62668.5	-2.6
8	MREBET	41	303	-262	75035.5	-3.49
9	BOBOTSARI	24	270	-246	53922.5	-4.56
10	KARANGREJA	7	184	-177	44219.5	-4
11	KARANGANYAR	16	171	-155	39964	-3.88
12	KARANGMONCOL	16	282	-266	57146	-4.65
13	REMBANG	31	398	-367	67306.5	-5.45
14	BOJONGSARI	21	230	-209	60548.5	-3.45
15	PADAMARA	36	260	-224	44558.5	-5.03
16	PENGADEGAN	7	166	-159	40301.5	-3.95
17	KARANGJAMBU	7	112	-105	26458.5	-3.97
18	KERTANEGARA	9	167	-158	36654	-4.31
Jumlah		436	4,526	-4,090	977740.5	-4.18

Jumlah Migrasi Bruto Per Kecamatan

No	Kecamatan	Jumlah Migrasi Masuk		Jumlah Migrasi Keluar		Jumlah Migrasi Bruto	
		n	%	n	%	n	%
1	KEMANGKON	26	5.96%	359	7,93%	385	7,76%
2	BUKATEJA	32	7.34%	410	9,06%	442	8,91%
3	KEJOBONG	13	2.98%	177	3,91%	190	3,83%
4	KALIGONDANG	32	7.34%	208	4,60%	240	4,84%
5	PURBALINGGA	53	12.16%	398	8,79%	451	9,09%
6	KALIMANAH	40	9.17%	243	5,37%	283	5,70%
7	KUTASARI	25	5.73%	188	4,15%	213	4,29%
8	MREBET	41	9.40%	303	6,69%	344	6,93%
9	BOBOTSARI	24	5.50%	270	5,97%	294	5,93%
10	KARANGREJA	7	1.61%	184	4,07%	191	3,85%
11	KARANGANYAR	16	3.67%	171	3,78%	187	3,77%
12	KARANGMONCOL	16	3.67%	282	6,23%	298	6,01%
13	REMBANG	31	7.11%	398	8,79%	429	8,65%
14	BOJONGSARI	21	4.82%	230	5,08%	251	5,06%
15	PADAMARA	36	8.26%	260	5,74%	296	5,97%
16	PENGADEGAN	7	1.61%	166	3,67%	173	3,49%
17	KARANGJAMBU	7	1.61%	112	2,47%	119	2,40%
18	KERTANEGARA	9	2.06%	167	3,69%	176	3,55%
Jumlah		436	100,00%	4,526	100,00%	4,962	100,00%

Jumlah Kepala Keluarga dan Kepemilikan Kartu Keluarga per Kecamatan

No	Kecamatan	Jumlah Kepala Keluarga		Jumlah Kepemilikan Kartu Keluarga	
		n	%	n	%
1	KEMANGKON	21,661	6,67%	21,338	6,67%
2	BUKATEJA	25,559	7,88%	25,185	7,88%
3	KEJOBONG	17,244	5,31%	16,992	5,31%
4	KALIGONDANG	22,065	6,80%	21,860	6,84%
5	PURBALINGGA	19,997	6,16%	19,808	6,19%
6	KALIMANAH	18,671	5,75%	18,475	5,78%
7	KUTASARI	20,643	6,36%	20,403	6,38%
8	MREBET	25,302	7,80%	24,915	7,79%
9	BOBOTSARI	18,020	5,55%	17,789	5,56%
10	KARANGREJA	14,009	4,32%	13,800	4,32%
11	KARANGANYAR	13,276	4,09%	13,074	4,09%
12	KARANGMONCOL	18,002	5,55%	17,612	5,51%
13	REMBANG	21,346	6,58%	20,742	6,49%
14	BOJONGSARI	19,968	6,15%	19,719	6,17%
15	PADAMARA	14,894	4,59%	14,730	4,61%
16	PENGADEGAN	13,603	4,19%	13,424	4,20%
17	KARANGJAMBU	8,390	2,59%	8,207	2,57%
18	KERTANEGARA	11,879	3,66%	11,719	3,66%
Jumlah		324,529	100	319,792	100

Rata-rata Jumlah Anggota Keluarga Per-Kecamatan

No	Kecamatan	Jumlah Penduduk		Jumlah Kepemilikan Kartu Keluarga		Rata-Rata Jumlah Anggota Keluarga
		n	%	n	%	
1	KEMANGKON	63,589	6.45%	21,338	6,67%	2.98
2	BUKATEJA	77,789	7.89%	25,185	7,88%	3.09
3	KEJOBONG	50,683	5.14%	16,992	5,31%	2.98
4	KALIGONDANG	65,146	6.61%	21,860	6,84%	2.98
5	PURBALINGGA	58,479	5.93%	19,808	6,19%	2.95
6	KALIMANAH	55,906	5.67%	18,475	5,78%	3.03
7	KUTASARI	63,238	6.42%	20,403	6,38%	3.1
8	MREBET	75,877	7.70%	24,915	7,79%	3.05
9	BOBOTSARI	54,270	5.51%	17,789	5,56%	3.05
10	KARANGREJA	44,625	4.53%	13,800	4,32%	3.23
11	KARANGANYAR	40,335	4.09%	13,074	4,09%	3.09
12	KARANGMONCOL	57,663	5.85%	17,612	5,51%	3.27
13	REMBANG	67,841	6.88%	20,742	6,49%	3.27
14	BOJONGSARI	60,961	6.19%	19,719	6,17%	3.09
15	PADAMARA	44,877	4.55%	14,730	4,61%	3.05
16	PENGADEGAN	40,566	4.12%	13,424	4,20%	3.02
17	KARANGJAMBU	26,768	2.72%	8,207	2,57%	3.26
18	KERTANEGARA	36,930	3.75%	11,719	3,66%	3.15
Jumlah		985,543	100,00%	319,792	100,00%	3.08

Jumlah Kepala Keluarga Berdasarkan Kepemilikan Kartu Keluarga Menurut Kelompok Umur

No	Kelompok Umur	Pria		Wanita		Jumlah	
		n	%	n	%	n	%
1	0-4	0	0.00%	1	0,00%	1	0,00%
2	5-9	1	0.00%	0	0,00%	1	0,00%
3	10-14	1	0.00%	1	0,00%	2	0,00%
4	15-19	154	0.06%	67	0,15%	221	0,07%
5	20-24	5,663	2.07%	691	1,51%	6,354	1,99%
6	25-29	21,032	7.68%	1,668	3,64%	22,700	7,10%
7	30-34	30,361	11.08%	2,122	4,63%	32,483	10,16%
8	35-39	36,010	13.14%	2,805	6,12%	38,815	12,14%
9	40-44	34,237	12.50%	3,372	7,36%	37,609	11,76%
10	45-49	32,214	11.76%	3,599	7,85%	35,813	11,20%
11	50-54	27,576	10.07%	4,137	9,03%	31,713	9,92%
12	55-59	25,077	9.15%	4,796	10,47%	29,873	9,34%
13	60-64	19,617	7.16%	4,771	10,41%	24,388	7,63%
14	65-69	15,786	5.76%	5,038	10,99%	20,824	6,51%
15	70-74	10,869	3.97%	4,640	10,13%	15,509	4,85%
16	>=75	15,370	5.61%	8,116	17,71%	23,486	7,34%
Jumlah		273,968	100,00%	45,824	100,00%	319,792	100,00%

Jumlah Kepala Keluarga Berdasarkan Kepemilikan Kartu Keluarga Menurut Pendidikan

No	Tingkat Pendidikan	Pria		Wanita		Jumlah	
		n	%	n	%	n	%
1	Tidak/Belum Sekolah	7,115	2.60%	3,443	7,51%	10,558	3,30%
2	Belum Tamat SD/Sederajat	6,345	2.32%	3,231	7,05%	9,576	2,99%
3	Tamat SD/Sederajat	145,427	53.08%	27,980	61,06%	173,407	54,22%
4	SLTP/Sederajat	54,851	20.02%	5,741	12,53%	60,592	18,95%
5	SLTA/Sederajat	46,355	16.92%	4,163	9,08%	50,518	15,80%
6	Diploma I/II	1,385	0.51%	183	0,40%	1,568	0,49%
7	Akademi/Diploma III	2,801	1.02%	306	0,67%	3,107	0,97%
8	Diploma IV/Strata I	9,231	3.37%	753	1,64%	9,984	3,12%
9	Strata II	431	0.16%	22	0,05%	453	0,14%
10	Strata III	27	0.01%	2	0,00%	29	0,01%
Jumlah		273,968	100,00%	45,824	100,00%	319,792	100,00%

Jumlah Kepala Keluarga Berdasarkan Kepemilikan Kartu Keluarga Menurut Status Kawin

No	Status Perkawinan	Pria		Wanita		Jumlah	
		n	%	n	%	n	%
1	Belum Kawin	2,731	1.00%	1,710	3,73%	4,441	1,39%
2	Kawin	259,797	94.83%	9,172	20,02%	268,969	84,11%
3	Cerai Hidup	4,517	1.65%	8,522	18,60%	13,039	4,08%
4	Cerai Mati	6,923	2.53%	26,420	57,66%	33,343	10,43%
Jumlah		273,968	100,00%	45,824	100,00%	319,792	100,00%

Jumlah Kepala Keluarga Berdasarkan Kepemilikan Kartu Keluarga Menurut Jenis Pekerjaan

No	Jenis Pekerjaan	Pria		Wanita		Jumlah	
		n	%	n	%	n	%
1	Belum/Tidak Bekerja	2,367	0.86%	2,639	5,76%	5,006	1,57%
2	Mengurus Rumah Tangga	99	0.04%	11,134	24,30%	11,233	3,51%
3	Pelajar/Mahasiswa	345	0.13%	174	0,38%	519	0,16%
4	Pensiunan	5,333	1.95%	1,213	2,65%	6,546	2,05%
5	Pegawai Negeri Sipil	5,410	1.97%	405	0,88%	5,815	1,82%
6	Tentara Nasional Indonesia	1,067	0.39%	0	0,00%	1,067	0,33%
7	Kepolisian RI	727	0.27%	0	0,00%	727	0,23%
8	Perdagangan	4,161	1.52%	672	1,47%	4,833	1,51%
9	Petani/Pekebun	67,233	24.54%	11,660	25,45%	78,893	24,67%
10	Peternak	163	0.06%	7	0,02%	170	0,05%
11	Nelayan/Perikanan	39	0.01%	0	0,00%	39	0,01%
12	Industri	1,041	0.38%	69	0,15%	1,110	0,35%
13	Konstruksi	403	0.15%	1	0,00%	404	0,13%
14	Transportasi	584	0.21%	1	0,00%	585	0,18%
15	Karyawan Swasta	74,527	27.20%	5,905	12,89%	80,432	25,15%
16	Karyawan BUMN	475	0.17%	12	0,03%	487	0,15%
17	Karyawan BUMD	243	0.09%	10	0,02%	253	0,08%
18	Karyawan Honoror	691	0.25%	61	0,13%	752	0,24%
19	Buruh Harian Lepas	32,925	12.02%	4,453	9,72%	37,378	11,69%

20	Buruh Tani/Perkebunan	7,096	2.59%	986	2,15%	8,082	2,53%
21	Buruh Nelayan/Perikanan	25	0.01%	1	0,00%	26	0,01%
22	Buruh Peternakan	75	0.03%	3	0,01%	78	0,02%
23	Pembantu Rumah Tangga	7	0.00%	264	0,58%	271	0,08%
24	Tukang Cukur	28	0.01%	2	0,00%	30	0,01%
25	Tukang Listrik	40	0.01%	2	0,00%	42	0,01%
26	Tukang Batu	1,632	0.60%	0	0,00%	1,632	0,51%
27	Tukang Kayu	1,556	0.57%	0	0,00%	1,556	0,49%
28	Tukang Sol Sepatu	17	0.01%	2	0,00%	19	0,01%
29	Tukang Las/Pandai Besi	64	0.02%	0	0,00%	64	0,02%
30	Tukang Jahit	427	0.16%	63	0,14%	490	0,15%
31	Tukang Gigi	20	0.01%	0	0,00%	20	0,01%
32	Penata Rias	1	0.00%	12	0,03%	13	0,00%
33	Penata Busana	1	0.00%	0	0,00%	1	0,00%
34	Penata Rambut	1	0.00%	1	0,00%	2	0,00%
35	Mekanik	117	0.04%	0	0,00%	117	0,04%
36	Seniman	41	0.01%	2	0,00%	43	0,01%
37	Tabib	5	0.00%	1	0,00%	6	0,00%
38	Paraji	4	0.00%	38	0,08%	42	0,01%
39	Perancang Busana	0	0.00%	0	0,00%	0	0,00%
40	Penterjemah	2	0.00%	0	0,00%	2	0,00%
41	Imam Mesjid	16	0.01%	0	0,00%	16	0,01%
42	Pendeta	25	0.01%	1	0,00%	26	0,01%

43	Pastor	3	0.00%	0	0,00%	3	0,00%
44	Wartawan	26	0.01%	1	0,00%	27	0,01%
45	Ustadz/Mubaligh	58	0.02%	4	0,01%	62	0,02%
46	Juru Masak	2	0.00%	2	0,00%	4	0,00%
47	Promotor Acara	0	0.00%	0	0,00%	0	0,00%
48	Anggota DPR-RI	0	0.00%	0	0,00%	0	0,00%
49	Anggota DPD	0	0.00%	0	0,00%	0	0,00%
50	Anggota BPK	0	0.00%	0	0,00%	0	0,00%
51	Presiden	0	0.00%	0	0,00%	0	0,00%
52	Wakil Presiden	0	0.00%	0	0,00%	0	0,00%
53	Anggota Mahkamah Konstitusi	0	0.00%	0	0,00%	0	0,00%
54	Anggota Kabinet/Kementerian	0	0.00%	0	0,00%	0	0,00%
55	Duta Besar	0	0.00%	0	0,00%	0	0,00%
56	Gubernur	0	0.00%	0	0,00%	0	0,00%
57	Wakil Gubernur	1	0.00%	0	0,00%	1	0,00%
58	Bupati	1	0.00%	0	0,00%	1	0,00%
59	Wakil Bupati	0	0.00%	1	0,00%	1	0,00%
60	Walikota	0	0.00%	0	0,00%	0	0,00%
61	Wakil Walikota	0	0.00%	0	0,00%	0	0,00%
62	Anggota DPRD Provinsi	1	0.00%	0	0,00%	1	0,00%
63	Anggota DPRD Kabupaten/Kota	17	0.01%	1	0,00%	18	0,01%
64	Dosen	62	0.02%	7	0,02%	69	0,02%
65	Guru	1,966	0.72%	263	0,57%	2,229	0,70%

66	Pilot	0	0.00%	0	0,00%	0	0,00%
67	Pengacara	11	0.00%	2	0,00%	13	0,00%
68	Notaris	5	0.00%	0	0,00%	5	0,00%
69	Arsitek	2	0.00%	0	0,00%	2	0,00%
70	Akuntan	5	0.00%	1	0,00%	6	0,00%
71	Konsultan	9	0.00%	0	0,00%	9	0,00%
72	Dokter	67	0.02%	3	0,01%	70	0,02%
73	Bidan	0	0.00%	30	0,07%	30	0,01%
74	Perawat	201	0.07%	27	0,06%	228	0,07%
75	Apoteker	8	0.00%	5	0,01%	13	0,00%
76	Psikiater/Psikolog	0	0.00%	0	0,00%	0	0,00%
77	Penyiar Televisi	0	0.00%	0	0,00%	0	0,00%
78	Penyiar Radio	3	0.00%	0	0,00%	3	0,00%
79	Pelaut	55	0.02%	0	0,00%	55	0,02%
80	Peneliti	2	0.00%	0	0,00%	2	0,00%
81	Sopir	3,962	1.45%	3	0,01%	3,965	1,24%
82	Pialang	2	0.00%	1	0,00%	3	0,00%
83	Paranormal	5	0.00%	1	0,00%	6	0,00%
84	Pedagang	17,075	6.23%	3,185	6,95%	20,260	6,34%
85	Perangkat Desa	1,932	0.71%	19	0,04%	1,951	0,61%
86	Kepala Desa	149	0.05%	2	0,00%	151	0,05%
87	Biarawati	4	0.00%	0	0,00%	4	0,00%
88	Wiraswasta	38,841	14.18%	2,360	5,15%	41,201	12,88%

89	Lainnya	460	0.17%	112	0,24%	572	0,18%
Jumlah		273,968	100,00%	45,824	100,00%	319,792	100,00%